

EC series for PCB

Compact emergency switches for PCB •
panel cut-out Ø 22 mm



DISTINCTIVE FEATURES

Ultra compact emergency stop switches with Ø22 mm bushing
PCB mounting

Front sealing : IP65

Approved according to UL 60947-5-1, IEC 60947-5-5



ELECTRICAL SPECIFICATIONS

- Electrical function : Dual pole, Normally closed contact (NC).
- Current/voltage rating (EN60947-5-1):
Ui : 250 V, Uimp : 2.5 kV, direct opening action
AC15 B300, 3 A/120 V; 1.5 A/240 V, Ith: 5 A
DC13 R300, 220 mA/125 V; 110 mA/250 V, Ith: 1 A
20 mV to 42 VDC - 1 mA to 100 mA
- Electrical life : 50,000 lifecycle (6,050 lifecycles according EN60947-5-1),
- Dielectric strength : 2,500 Vrms 50 Hz min. between terminals



ENVIRONMENTAL SPECIFICATIONS

- Front panel sealing : IP65
- Operating temperature : -25 °C to +70 °C (-13 °F to +158 °F)
- Storage temperature : -40 °C to +85 °C (-40 °F to +185 °F)



GENERAL SPECIFICATIONS

- Panel thickness : 1.5 to 2.5 mm (.039 - .078) max.
- Torque : 1.5 Nm max. applied to nut



MATERIALS

- Contacts and terminals : Gold plated
 - Bushing : PA66
 - Actuator : PA66
 - Switch block : PA66
- APEM products may be recycled at end-of-life for the re-claiming of valuable metal components.

The company reserves the right to change specifications without notice.



Distributed by



OMEGA FUSIBILI S.p.A.

Via Edison, 10 - 20057 Assago (MI) - Italia

Tel. +39 02 488481 - Fax +39 02 4882522

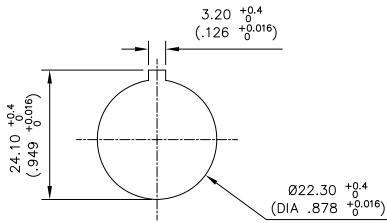
e-mail: omega@omegafusibili.it

EC series for PCB

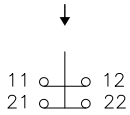
Compact emergency switches for PCB • panel cut-out Ø 22 mm



PANEL CUT-OUT



ELECTRICAL FUNCTION



Dual pole
Normally closed

AGENCY APPROVALS



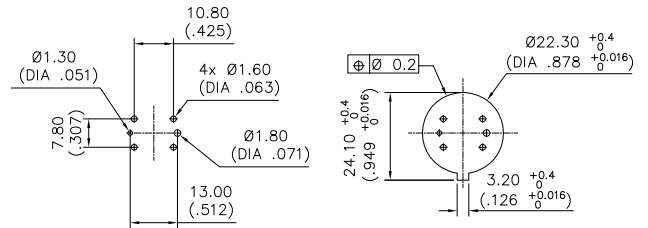
UL 60 947-5-1
IEC 60 947.5-5
UL 60 947.1
CSA C22.2 N°60 947-5.1.14
CSA C22.2 N°60 947.1.13

2014/35/EU

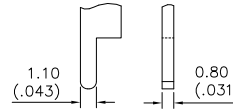


PCB MOUNTING

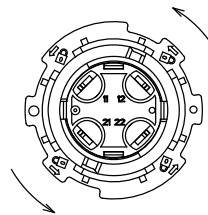
PCB LAYOUT - TOP VIEW



PCB PINS - CLOSE UP VIEW



LOCKING

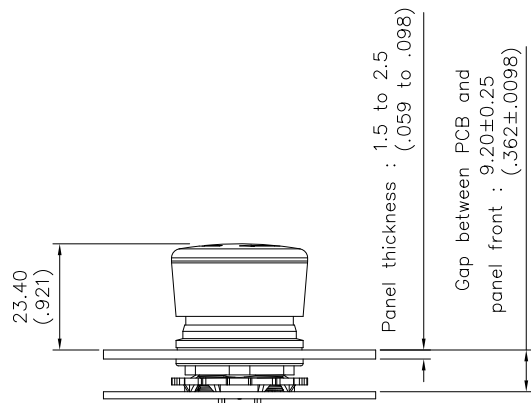


Bottom View

Rotate the ring counterclockwise to lock the lower and upper part together.

ASSEMBLY

- Distance between front panel and PCB top edge = 9.20 ± 0.25 mm imperative for compliance to EN60947-5-5.
- The mismatch of mechanical block and contact block must be in range of $\varnothing 0.2$ mm.



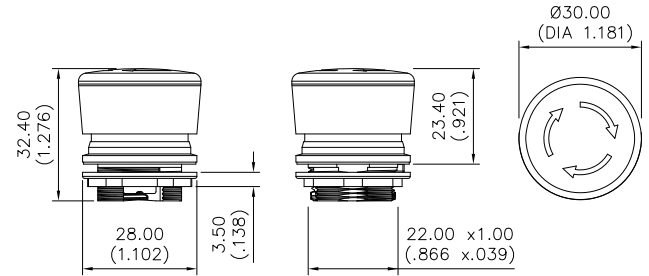
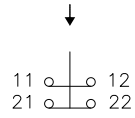
EC series for PCB

Compact emergency switches for PCB •
panel cut-out Ø 22 mm

ACTUATOR



EC-AMA-H-001-A



SWITCH BLOCK



EC-AMA-L-001-A

